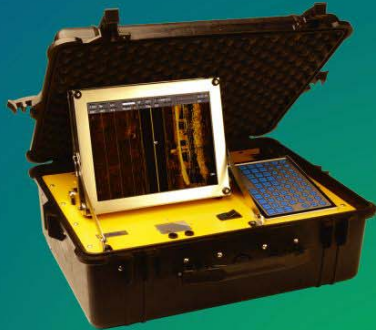


The CM2 Sidescan Sonar System

High definition .. Versatile .. Easy to use .. Robust



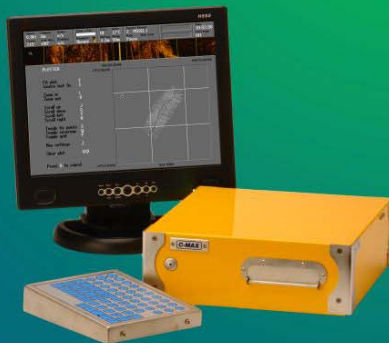
CM2 C-Case all-in-one unit, waterproof to IP65 when operating, with integral monitor, keypad and GlidePoint cursor pad. Ideal for open boat use and exposed conditions.



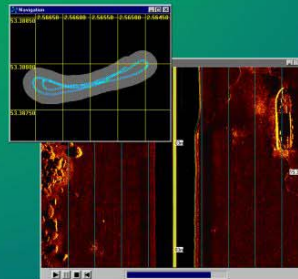
CM2 Data Acquisition Unit (DAU/IM) with integral flip-up 12.1" stainless steel monitor and carrying handle. Splashproof and portable.



CM2 digital towfish; dual frequency 325/100kHz, dual frequency 780/325kHz, or single frequency options.



CM2 Data Acquisition Unit (DAU) with external monitor and keypad. Comes with navigation, trackerball and counting pulley interfaces. Runs MaxPro data acquisition and display software.



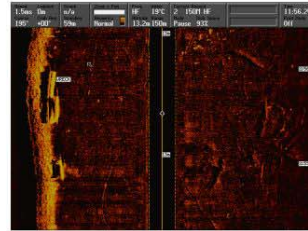
Licence-free MaxView Windows software for replaying records and converting file formats. Ideal for distributing records to survey clients.

C-MAX

www.cmaxsonar.com

High Definition Images

- new ultra-low-noise towfish electronics
- DIGITAL towfish and 2-wire cable telemetry; no crosstalk or loss of quality in the tow cable
- lateral resolution of 39mm (780kHz), 78mm (325kHz); 156mm (100kHz)
- range out to 500m (100kHz); 150m (325kHz); 25m (780kHz)
- enhanced immunity to unwanted surface reflections



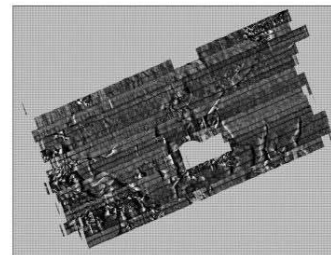
WINCH OPTIONS
INCLUDE THE SK172
PORTABLE UNIT

Versatile

- choice of dual frequency 325/100kHz, dual frequency 780/325kHz, or single frequency towfish
- choice of three types of data acquisition unit, including waterproof clamshell C-Case version
- option of a compact transceiver unit to work with third-party data acquisition systems
- wide range of cable and winch options
- optional sensor interfaces, including magnetometer
- ROV configurations
- towfish can be inverted for scanning ship's hulls

Easy to Use

- intuitive, full-featured MaxPro acquisition software
- all main display and towfish functions are controlled by a single keypress on the splashproof keypad; minimum use of menus
- MaxPro status bar shows all main parameters in the clearest possible form
- plotter window showing track, waypoints and swept area
- automatic towfish gain control and altitude measurement
- transducer beam depression switched in seconds, without tools
- towfish handle and slim outline allows easy launch and recovery
- licence-free Windows MaxView software allows replay, format conversion, editing, etc, on any PC, anywhere
- clear, concise, easily understood user handbook



EASY EXPORT TO MOSAICING TOOLS



DOUBLE O-RING SEALED,
RATED TO 2500M

Robust

- towfish constructed of stainless steel; no aluminium
- safety mechanism to save the towfish if it strikes an obstruction
- rugged data acquisition unit, with all-stainless-steel case or polypropylene clamshell case
- large capacity removable magneto-optical media has 50 year archive life
- 3 year warranty

**A full specification
can be downloaded
from our website:**

www.cmaxsonar.com

Your local representative _____



C-MAX Ltd, Unit B1, Roman Hill Business Park, Broadmayne, Dorchester DT2 8LY, U.K.
Tel +44 1305 853005 Fax +44 1305 852136 email: sales@cmaxsonar.com